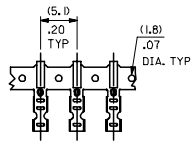
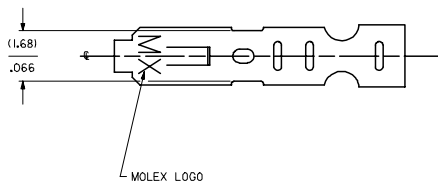
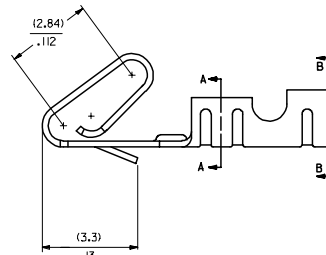
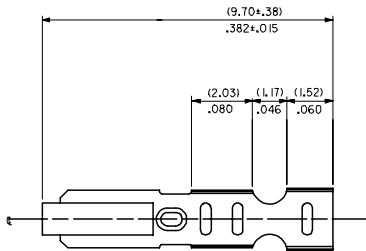
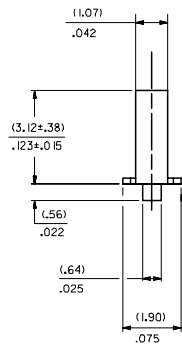
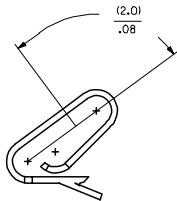


CARRIER VIEW

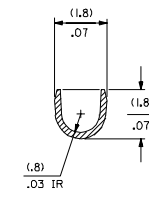


SELECT GOLD LOCATION

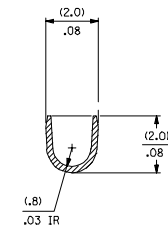


NOTES:

1. CRIMP IS FOR 22-30 GA WIRE, WITH .062 DIA INSULATION MAX.
2. INSERTION FORCE OF TERMINAL INTO .100 C CONNECTOR IS 2.5 LBS. MAX
3. TERMINALS MUST RETAIN 8 LBS PULL FOR 1 MIN. IN KK .100 C HOUSING.
4. GAP REQUIRED ON UNPLATED TERMINALS ONLY.
5. MATERIAL: .0080+.0004 THICK PHOS BRONZE ALLOY 510
6. DIMENSIONS GIVEN ACROSS CENTERLINES ARE SYMMETRICAL ABOUT THOSE CENTERLINES WITHIN HALF THE TOTAL TOLERANCE.
7. THIS PART CONFORMS TO PRODUCT SPEC 10-07



SECTION A-A
BACKGROUND OMITTED



SECTION B-B
BACKGROUND OMITTED

6459-(***)**

FORM
L=LOOSE
A=CHAIN PER DETAIL A

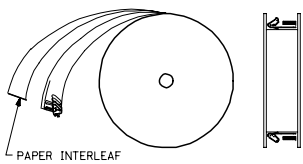
PLATING

PER SDES-88

- (P909) OVERALL HOT TIN DIP: .00254 MICROMETERS MIN
- (S50) SELECT GOLD: .00038 MICROMETERS MIN.
- OVERALL GOLD FLASH: .00005 MICROMETERS MIN.
- OVERALL NICKEL UNDERPLATE: .00076 MICROMETERS MIN.
- (S55) SELECT GOLD: .00038 MICROMETERS MIN.
- OVERALL NICKEL UNDERPLATE: .00076 MICROMETERS MIN.

- THE PRIMARY SHIPPING CARTON WILL BE LABELED 'COMPLIANT TO RoHS DIRECTIVE 2002/95/EC AND ELV ANNEX II OF DIRECTIVE 2000/53/EC.' CARTONS WITHOUT THIS LABEL MAY CONTAIN PRODUCT WITH TIN-LEAD PLATING.

WINDING DETAIL A



CHANGE TO ME10 EC NO: UCP2005-0941 DRW:WADP/ATMOL 2004/11/16 CHK:CSAMEC 2008/04/09 APPR:MMG/LLS 2008/11/09 DESCRIPTION	QUALITY SYMBOLS ▽=0 ▽=0		GENERAL TOLERANCES (UNLESS SPECIFIED) mm INCH 4 PLACES ± .005 ± .005 3 PLACES ± .010 ± .010 2 PLACES ± 0.13 ± .010 1 PLACE ± 0.25 ± .010 ANGULAR ±1/2°		DIMENSION STYLE IN/MM		SCALE --- INCH	DESIGN UNITS INCH	THIRD ANGLE PROJECTION
	DRAWN BY SAMIEC 01/21/92		DATE 01/21/92		CHECKED BY PATEL 01/21/92		DATE 01/21/92		CRIMP TERMINAL 22-30 GA WIRE SAME AS 2759 EXCEPT MATL
	APPROVED BY LENZ 01/21/92		DATE 01/21/92		MATERIAL NO. SEE CHART		DOCUMENT NO. SD-6459		SHEET NO. 1 OF 2
	DRAFT WHERE APPLICABLE MUST REMAIN WITHIN DIMENSIONS		SIZE D		THIS DRAWING CONTAINS INFORMATION THAT IS PROPRIETARY TO MOLEX INCORPORATED AND SHOULD NOT BE USED WITHOUT WRITTEN PERMISSION				

20 19 18 17 16 15 14 13 12 11 10 9 8 7 6 5 4 3 2 1

M
L
K
J
I
H
G
F
E
D
C
B
A

6459-(***)*															
PART NO.	ENG. NO.	PART NO.	ENG. NO.	PART NO.	ENG. NO.	PART NO.	ENG. NO.	PART NO.	ENG. NO.	PART NO.	ENG. NO.	PART NO.	ENG. NO.	PART NO.	ENG. NO.
40-07-0815	6459-(999) 6459-(999)L														
08-52-0101	6459-(P909)														
08-52-0123	6459-(P909)L														
08-65-0801	6459-(56 I) 6459-(56 I)L														
08-52-0118	6459-(224) 6459-(224)L														
08-52-0121	6459-(122)														
08-52-0122	6459-(122)L														
08-65-0811	6459-(558)														
08-65-0812	6459-(558)L														
08-65-0815	6459-(555)														
08-65-0816	6459-(555)L														
08-65-0813	6459-(550)														
08-65-0814	6459-(550)L														
08-65-0817	6459-(23 I)														
08-65-0818	6459-(23 I)L														

CHANGE TO ME10 EC NO: UCP2005-0941 DRAWN: ADRIAN LIND 2004/11/16 CHKD: SAMIEC 2006/07/06 APPR: MARGILLIS 2006/11/09	QUALITY SYMBOLS ▽=0 ▽=0	GENERAL TOLERANCES (UNLESS SPECIFIED) <table border="1"> <tr> <th></th> <th>mm</th> <th>INCH</th> </tr> <tr> <td>4 PLACES</td> <td>± .005</td> <td>± .0005</td> </tr> <tr> <td>3 PLACES</td> <td>± .005</td> <td>± .0005</td> </tr> <tr> <td>2 PLACES</td> <td>± 0.13</td> <td>± 0.010</td> </tr> <tr> <td>1 PLACE</td> <td>± 0.25</td> <td>± .010</td> </tr> <tr> <td colspan="3">ANGULAR ±1/2°</td> </tr> </table>		mm	INCH	4 PLACES	± .005	± .0005	3 PLACES	± .005	± .0005	2 PLACES	± 0.13	± 0.010	1 PLACE	± 0.25	± .010	ANGULAR ±1/2°			DIMENSION STYLE IN/MM	SCALE --- INCH	DESIGN UNITS INCH	THIRD ANGLE PROJECTION
		mm	INCH																					
	4 PLACES	± .005	± .0005																					
	3 PLACES	± .005	± .0005																					
2 PLACES	± 0.13	± 0.010																						
1 PLACE	± 0.25	± .010																						
ANGULAR ±1/2°																								
DRAWN BY SAMIEC	DATE 01/21/92	CHECKED BY PATEL	DATE 01/21/92	APPROVED BY LENZ	DATE 01/21/92	MATERIAL NO. SD-6459																		
DRAFT WHERE APPLICABLE MUST REMAIN WITHIN DIMENSIONS		SEE CHARTS		THIS DRAWING CONTAINS INFORMATION THAT IS PROPRIETARY TO MOLEX INCORPORATED AND SHOULD NOT BE USED WITHOUT WRITTEN PERMISSION		SHEET NO. 2																		
TITLE CRIMP TERMINAL 22-30 GA WIRE SAME AS 2759 EXCEPT MATL						DOCUMENT NO. MOLEX INCORPORATED																		

19 18 17 16 15 14 13 12 11 10 9 8 7 6 5 4 3 2 1